

WIZARDS & WARRIORS

NES-WW-USA

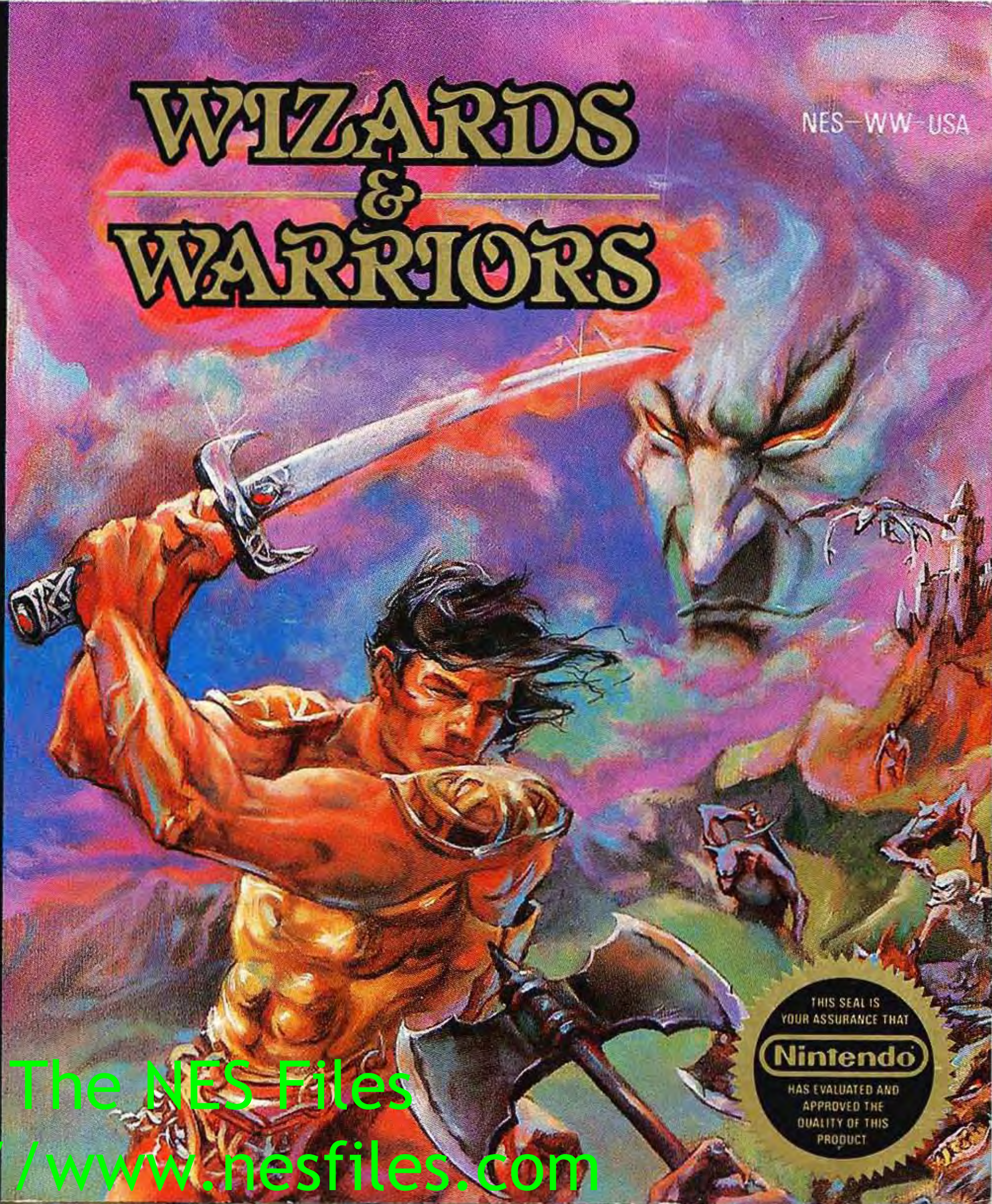
GAME PAK
INSTRUCTIONS

Licensed by Nintendo
for play on the

Nintendo
ENTERTAINMENT
SYSTEM®

The NES Files
<http://www.nesfiles.com>

THIS SEAL IS
YOUR ASSURANCE THAT
Nintendo
HAS EVALUATED AND
APPROVED THE
QUALITY OF THIS
PRODUCT



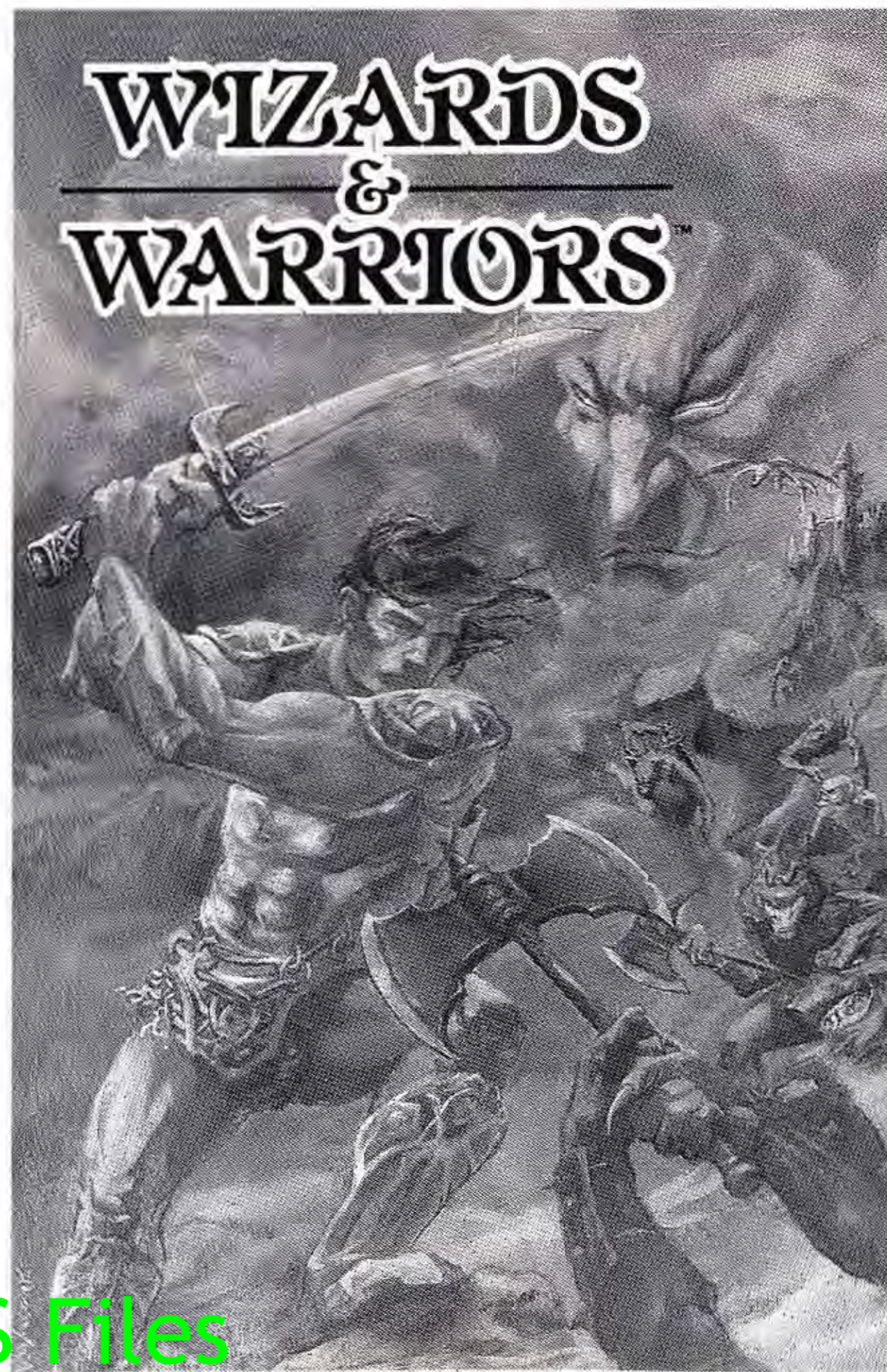
She's sleeping now, the princess.
But who knows *what* he has
planned for her once she awakens...

He is Wizard Malkil.

Legend has it that Malkil was
once one of the greatest. So great,
in fact, that even the renowned
Merlin was his pupil. But alas, Malkil
has gone mad with age. And
turned his powerful magic to the
dark side.

You are Kuros, the only knight
warrior brave enough to enter the
woods of Elrond. Strong enough to
wield the Brightsword. powerful
enough to ward off the demons,
the undead and the caverns of
fire. And clever enough to discover
where Malkil has hidden his
prisoner.

Nintendo® and Nintendo Entertainment System®
are trademarks of Nintendo of America Inc.



The NES Files
<http://www.nesfiles.com>

PREPARING FOR YOUR QUEST

1. Make sure the power switch is OFF.
 2. Insert the Wizards & Warriors™ cartridge as described in your NINTENDO ENTERTAINMENT SYSTEM® manual.
 3. Turn the power switch ON.
- TO START:** Push the START BUTTON on Player 1's controller.

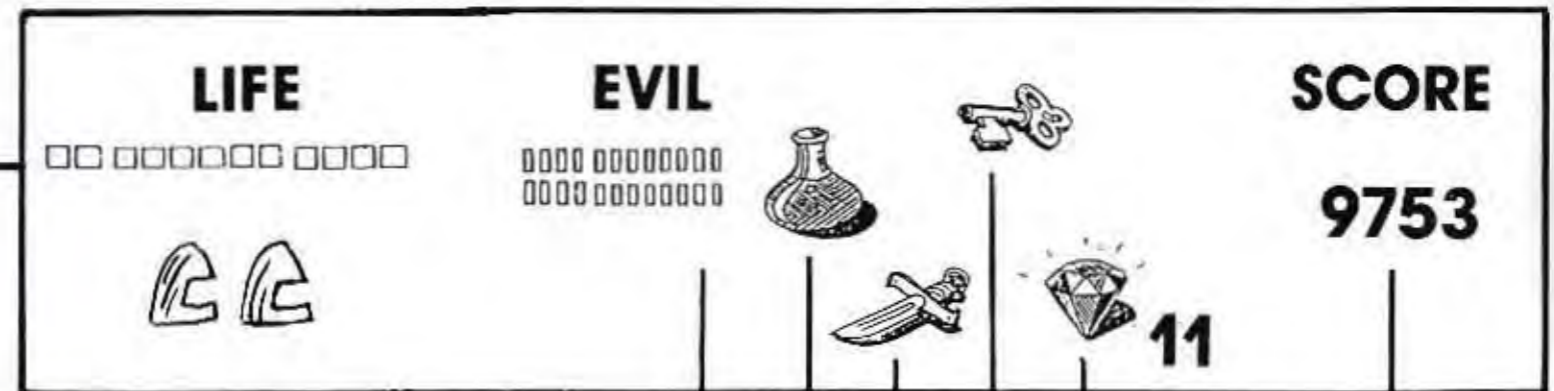
THE SCREEN BEFORE YOU

Once you press the START BUTTON, you will first see a screen showing a map of the Kingdom of Elrond. Study it quickly. For it will only be upon the screen for a few seconds.



Then the screen will change to the playing area. The scene you have entered (in the beginning, the forest scene) will occupy

most of the screen. Yet across the bottom, you will always see the following information:



LIFE FORCE REMAINING

NUMBER OF LIVES REMAINING

BLACK MAGIC POWER OF ENEMY

OBJECT IN USE NOW (NON-SELECTABLE)

SPECIAL SELECTABLE OBJECTS

KEYS COLLECTED

GEM COUNT

SCORE

THE JOURNEY OF KUROS

Kuros is bound for the Castle IronSpire, deep in the dark, tangled woods of Elrond.

It is here in the castle that the evil Malkil has imprisoned the princess. But Malkil's powers reach beyond the castle walls. Far beyond them.

Creatures of the woods, caves, underground passageways and secret tunnels have all fallen under Malkil's treacherous spell. Which means they are all destined to try and stop anyone who tries to get anywhere near the princess.

But Kuros is famous for fighting evil. His thrice-blessed weapon,

Brightsword, is a legend of its own. So fighting irksome insects, menacing monsters or even ghoulish other-world characters should prove to be second nature. That is, until the enemy is empowered by Malkil's relentless Black Magic.

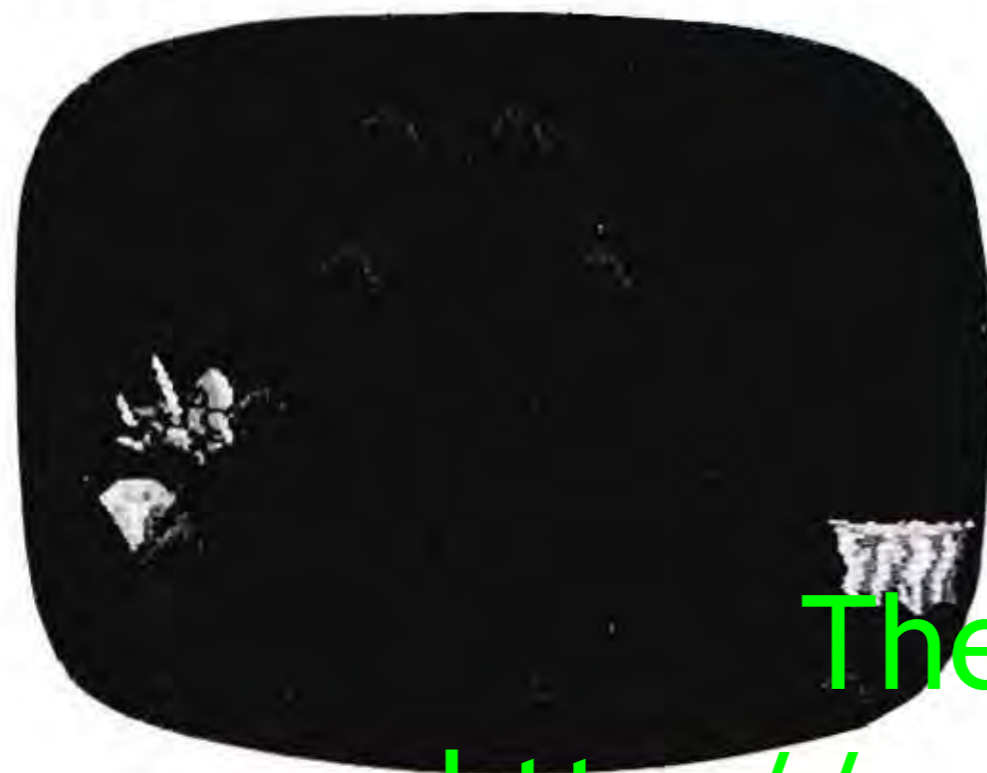
In addition to fending off enemies, there are many other factors to be concerned with. Like finding and collecting the right items and weapons. And using them in the right places and against the right enemies.

You'll start out in the forest — and you'll quickly see that things aren't exactly what they seem. You'll have to figure out how to get

inside the trees. To find what you'll need to get *on top* of them.

There will be secret caves to explore — caves filled with valuable and useful items. There will even be hidden rooms filled with lavish riches. But you'll have to use your head to locate them.

You'll have to maneuver through a series of tunnels. The tunnels are laden with diamonds. But they're also laden with tangled roots that seem to have a force all their own.



Beyond the tunnels are the caves. Some caves are freezing ice caves — as beautiful as they are eerie. Others are scalding hot lava caves — complete with lava bubbles and shooting columns of fire.

The early caves are riddled with valuable items of White Magic. So make sure to collect all the right gems, weapons and items before you leave.

Beyond the *second* forest, is the Castle IronSpire. And in order to go *into it*, you must first go *over it*.

Inside the castle are a series of mazes, each more complicated than the next. Use your keys — and your magic — to slip from room to room. And don't be surprised if you

find *other* captured maidens beside the princess herself.

And what awaits you beyond these mazes? Aha! Wouldn't you love to know...

And someday — maybe someday soon — you will.

TRAVELING THROUGH THE KINGDOM OF ELROND

The kingdom of Elrond is riddled with obstacles — both alive, unalive and even *undead*. Getting through it all will require a bit of physical prowess — and a great deal of cunning.

You must learn to *use* everything in your path to help you along the way. In fact, even enemies can often be of assistance if you know how to use them.

You must also learn when and where to use special objects and weapons to their fullest advantage. Some of these items can be carried with you at all times. Others will be replaced by any new items you pick up. You'll quickly come to know which is which.

In addition to collecting magic and weapons, you will also collect gems, coins and other valuables

along the way. In fact, collect as many of these as you possibly can. Because you'll need them to bribe certain enemies you'll most certainly encounter. If you don't have enough gems, these greedy creatures will never let you pass.

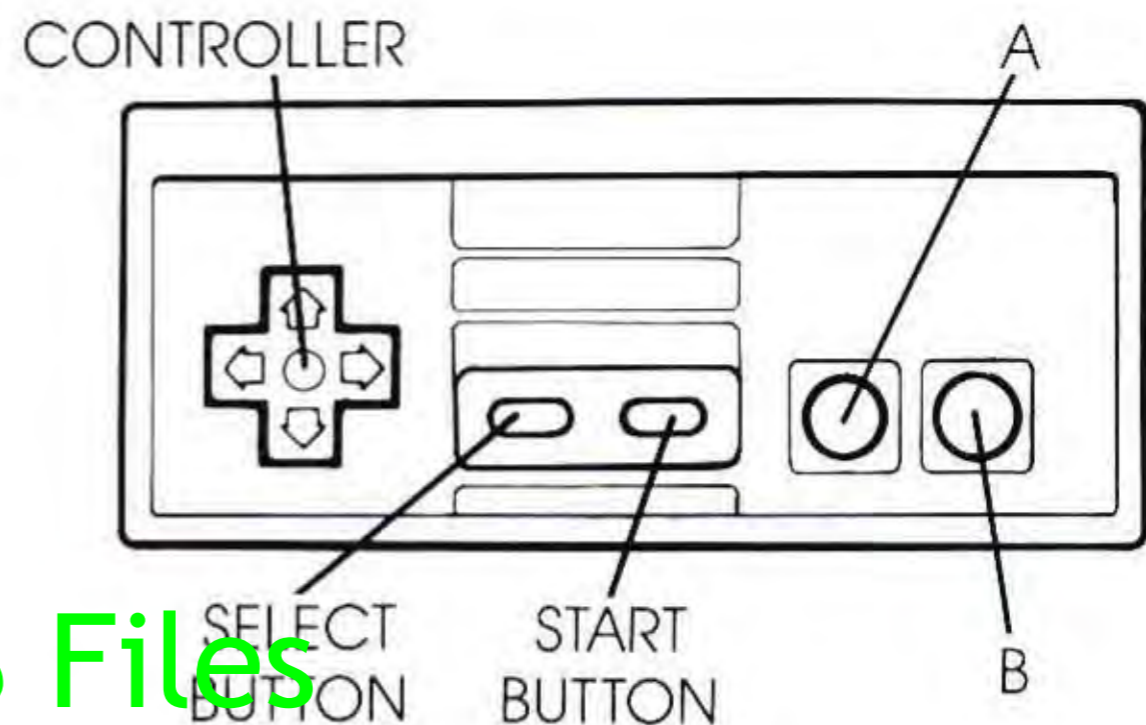
When you lose your life, you will be able to hold on to the items, weapons and valuables you have collected if you press *any* button

on your controller within 5 seconds after your energy runs out. You will then start at the beginning of the last level you were in — with your possessions all intact.

So gather your wits, your strength and your magic. Then study the following controller movements and you'll soon learn the ways of the Kingdom of Elrond.

THE CONTROLLER

The illustration shows you your control points. Throughout this instruction book we will refer to these controls by the names indicated here.



TO MOVE RIGHT OR LEFT — Press the CONTROLLER RIGHT or LEFT.

TO CROUCH — Press the CONTROLLER DOWN.

TO JUMP — Press BUTTON A.

FOR A DIAGONAL JUMP — Press BUTTON A while simultaneously pressing the CONTROLLER in the desired diagonal direction.

TO WIELD SWORD OR TO USE OTHER WEAPONS — Press BUTTON B.
*NOTE: The weapon you are using will be shown in the bar at the bottom of the screen. (See **The Screen**, page 4).*

TO USE MAGIC OR OTHER ITEMS — Press the SELECT BUTTON.

NOTE: To use magic, you must be in possession of it.

TO LEVITATE — Press the CONTROLLER UP.

HINT: To levitate, you must possess the right item.

TO PAUSE — Press the START BUTTON.

TO CONTINUE FROM LAST LEVEL YOU WERE IN WITH ALL YOUR POSSESSIONS INTACT — Press ANY BUTTON within 5 seconds.

TO RESTART — Press the START BUTTON again.

THE WIZARD'S BLACK MAGIC

Does it seem as if every creature, big and small, is working for Malkil? Maybe that's because they are!

He's a very powerful magician. Plus, he has summoned some very grotesque creatures to help him guard his stolen princess.

And as if Malkil doesn't have enough beastly enemies for you to overcome, the Forest of Elrond holds a few of her own.

Most of the creatures can be cut down by your mighty Brightsword. But many will require special weaponry or magic. You will have to remember which monsters succumb to which weapons.



The *Enemy's Black Magic Power* indicator on the screen, will give you clues as to how hard a given enemy will be to beat. The higher the *Enemy's Black Magic Power* reading, the more hits — and the stronger the weapons — you'll need to defeat the enemy.

Here's a listing of many of the enemies and hazards you'll encounter. And yet, there are so many, it would take a great tome to list them *all*.



Spider



Werewolf



Rock Face



Baby Vampire



Hornet



Acid



Queen Spider



Skeleton Changeling



Deadly Bat



Evil Ghost



Lightning



Eagle



Evil Goblin



Vampire Bat



Ghost



Wizard



Arrow



Bones



Fly



Souls



Snake



Fire Spout



Demon Skull



Bullet



Death Globe



**Skeleton's
Small
Bone**



Red Devil



**Winged
Goblin**



**Rock Pillar
Beast**



**Skeleton's
Big Bone**



**Hornet's
Nest**



Acorn



Skull Hive



Guardian



Jr. Rock Face



**Wizard's
Fireball**



**Skeleton's
Medium
Bone**



Ant



Prickly End



Bomb

THE WARRIOR'S WHITE MAGIC

The powers of goodness and truth are on your side. For the woods and even the caverns and

castle are filled with magic chests, magic potions and special objects to help you along the way.



Most weaponry and magical items will be replaced when you pick up a new item. However, some items, once found, can be carried constantly. They are:

The Dagger of Throwing
Axe
Shield of Protection
Feather of Feather Fall
Potion of Levitation

There are also gems, coins and other valuables you will collect. And acorns and torches that conceal bonus objects. There is even food (hunks of meat) — to add to your always depleting life force.

Here's a listing of the items you will discover along the way. Some are magical. Others are just plain practical. But they are all here to help you. So make good use of them.

Try to pick up everything you can. And, most of all, try to use everything you pick up. Because on this magical quest, you're going to need all the help you can get.



Chests

You'll notice chests of three different colors: red, blue and purple. Each chest contains weapons,

wealth or magical items. But to get inside each chest you need the key whose color matches that of the chest. Or else you need the *Boots of Force*.

Since many items replace items you are carrying, there are times when you'll want to leave certain chests unopened — so that you can hang on to certain items of value.



Doors

Like chests, they are either red, blue or purple. And like chests, they need the right color key to open them.



Keys

You'll find them in three different

colors. To help you open doors and chests of the same colors.



Boots of Force

These can be used instead of keys to open chests, doors and other places.



Potions

These also come in three different colors. And each color gives you a different type of power. For a limited amount of time.

RED POTION: Invulnerability

BLUE POTION: Extra Speed

PURPLE POTION: Extra Jump Height

Gems

Collect as many of these as possible. Because if you don't have enough of them, you won't be



able to bribe the monsters who guard each new level.

Red Gems

Worth double what purple gems are worth.



Acorn and Torch

Both of these conceal Bonus Objects.



Shield

Helps protect you against enemies.



Potion of Levitation

Allows you to float to the surface.



Dagger of Throwing

It's one of your most important weapons. Because it's quite deadly and comes back to you every time



you throw it. It's available early on. So don't miss it.

Axe of Igor

When your Brightsword just isn't enough.



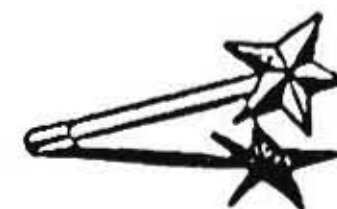
Feather of Feather Fall

This gives you a slow controlled descent — which allows you to stop at certain places on the way down.



Wand of Wonder

It's far-reaching ice rays freezes everything in its path.



Staff of Power

Spits out balls of deadly fire.



Cloak of Darkness

Hides you from the monsters.



Boots of Lava Walk

Lets you walk on lava, columns of fire and over other places that are too hot to handle.



Small & Large Coins

To earn extra points. Naturally, large coins are worth more points than small coins.



Exploding Egg

Fling it. Watch it destroy everything on the screen.



Alarm Clock

This clever little device freezes all enemies until the alarm sounds. So make good use of its time.



Scroll

This shows you the map for a few seconds. Look fast!



Small Knife

Makes your throwing weapon go farther.



Valuable Items

The following items, though not used in travel or in battle are worth valuable points:



The Orb

10,000 points



The Chalice

10,000 points



The Treasure Hoard

20,000 points

The NES Files

<http://www.nesfiles.com>

Damsels in Distress

Inside the castle, you will find several kidnapped maidens. Which proves that the princess isn't the first that Malkil has kidnapped. Rescuing each damsel will earn you many points.

First Damsel	50,000 points
Esmarelda	100,000 points
Galadriel	200,000 points
Grizelda	300,000 points
Penelope	400,000 points

THE MANY LIVES OF KUROS

Kuros begins the game with three lives. And each life starts with 12 life force units. But time and the trials of travel and battle take their toll. Sometimes, all too quickly. And when all the energy from one life has been drained, Kuros must start a new life.

Though the life force drains on its own with the passage of time, certain factors, like a one-on-one

encounter with the enemy, will make it drain at a much faster rate.

When all three lives have been used up, you can either start with three *new* lives from the level in which you lost your last life — keeping the items and wealth you have collected, but losing your points. Or you can start over from the beginning.

The NES Files

<http://www.nesfiles.com>

TO INCREASE YOUR LIFE FORCE —

Look for — and pick up — food (meat) randomly scattered throughout the kingdom.

TO START OVER FROM THE BEGINNING OF THE LAST SCREEN YOU WERE IN — Press ANY BUTTON

within 5 seconds after you've lost all your life force.

TO START OVER FROM THE BEGINNING OF THE GAME — Wait for more than 10 seconds and press the START BUTTON.

POINTS TO CONSIDER

The points you earn for catching certain items and defeating different enemies are added together

to produce your final score.

Here's what earns what:

<i>ITEM</i>	<i>POINTS</i>
Spider	100
Queen Spider	20,000
Death Globe	200
Acorn	500
Eagles	65-200
Red Devil	400

<i>ITEM</i>	<i>POINTS</i>
Arrow	400
Winged Goblin	300
Werewolf	500
Skull Hive	It's indestructible
Bones	300
Skeleton Changeling	50,000

The NES Files

18

<http://www.nesfiles.com>

<i>ITEM</i>	<i>POINTS</i>
Guardian	It's indestructible
Bomb	75
Rock Face	20,000
Rock Pillar Beast	It's indestructible
Evil Goblins	200-500
Hornet's Nest	It's indestructible
Fire Spout	It's indestructible
Prickly End	It's indestructible
Baby Vampire	25
Skeleton's Big Bone	50
Deadly Bat	100
Ant	25
Vampire Bat	20,000
Wizard's Fireball	0
Fly	25
Demon Skull	20,000
Hornet	25
Evil Ghost	20,000
Ghost	25
Souls	100-1000
Bullet	35
Acid	It's indestructible
Lightning	50
Skeleton's Small Bone	50
Skeleton's Medium Bone	50
Jr. Rock Face	65
Gems	100-200

<i>ITEM</i>	<i>POINTS</i>
Snake	500
Torch	500
Coins	200 or more
Potions	500
Exploding Egg	500
Alarm Clock	500
Scroll	1,000
Small Knife	100
Small Axe	200
Chest	1,000
Shield	1,000
Potion of Levitation	1,000
Dagger of Throwing	1,000
Axe of Agor	1,000
Feather of Feather Fall	1,000
Wand of Wonder	1,000
Staff of Power	1,000
Orb	10,000
Chalice	10,000
Treasure Hoard	5,000
Keys	200
Food	500
Cloak of Darkness	1,000
Boots of Lava Walk	1,000
Boots of Force	1,000
Wizard	50,000

The NES Files

<http://www.nesfiles.com>

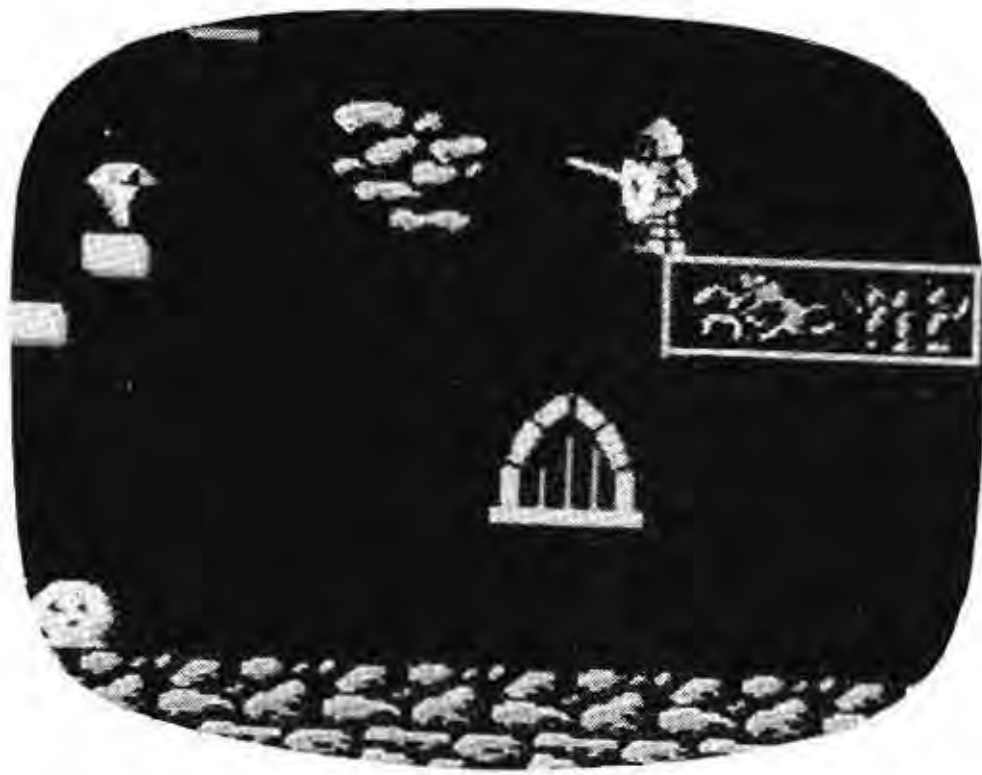
SPECIAL TIPS

- Remember to leave no corner unexplored, no stone unturned and nothing left behind. Because you're going to need all the weapons, magic and special items you can get your hands on.
- When jumping, remember: you can bounce off stationary as well as moving objects. But when



jumping off an enemy, use him strictly as a springboard. Because if you linger too long, you'll use up valuable life force energy.

- To progress to each new level, you need to have collected a certain number of gems. If you find it repeatedly impossible to get through to a new level, it may be that you haven't ever collected enough gems.
- When exploring the castle, don't be surprised if you find that the princess is not the *only* beautiful young maiden the evil Malkil had kidnapped. You will find he has several other damsels locked away there.



- When you lose a game, and want to start over from the beginning of the last level you were in, press ANY BUTTON within 5 seconds of losing all your life force energy.
- Some caverns and castle rooms are dead ends. So make sure you want to go in before you discover there is no way out.

THE TIME IS UPON THEE

She's waiting. And time is short.

You are Kuros, the only knight warrior strong enough in body and spirit to take on the treacherous Wizard Malkil. You're the only one who knows enough about the inner forests, about magic keys and special potions, and about conquering evil.

So don't wait any longer. The power lies within the strength of your hands and the purity of your soul.

Only you have magic strong enough to counter the blackness of Malkil's powers. So only you can overcome the darkness and bring the princess back to the throne.

Onward, Kuros!

ACCLAIM ENTERTAINMENT, INC. LIMITED WARRANTY

Acclaim Entertainment, Inc. warrants to the original purchaser only of this Acclaim software product that the medium on which this computer program is recorded is free from defects in materials and workmanship for a period of ninety (90) days from the date of purchase. This Acclaim software program is sold "as is," without express or implied warranty of any kind, and Acclaim is not liable for any losses or damages of any kind resulting from use of this program. Acclaim agrees for a period of ninety (90) days to either repair or replace, at its option, free of charge, any Acclaim software product, postage paid with proof of date of purchase, at its Factory Service Center. Replacement of the cartridge, free of charge to the original purchaser (except for the cost of returning the cartridge) is the full extent of our liability.

This warranty is not applicable to normal wear and tear. This warranty shall not be applicable and shall be void if the defect in the Acclaim software product has arisen through abuse, unreasonable use, mistreatment or neglect. THIS WARRANTY IS IN LIEU OF ALL OTHER WARRANTIES AND NO OTHER REPRESENTATIONS OR CLAIMS OF ANY NATURE SHALL BE BINDING ON OR OBLIGATE ACCLAIM. ANY IMPLIED WARRANTIES APPLICABLE TO THIS SOFTWARE PRODUCT INCLUDING WARRANTIES OF MERCHANTABILITY AND FITNESS FOR A PARTICULAR PURPOSE, ARE LIMITED TO THE NINETY (90) DAY PERIOD DESCRIBED ABOVE IN NO EVENT WILL ACCLAIM BE LIABLE FOR ANY SPECIAL INCIDENTAL OR CONSEQUENTIAL DAMAGES RESULTING FROM POSSESSION, USE OR MALFUNCTION OF THIS ACCLAIM SOFTWARE PRODUCT.

Some states do not allow limitations as to how long an implied warranty lasts and/or exclusions or limitations of incidental or consequential damages so the above limitations and/or exclusions of liability may not apply to you. This warranty gives you specific rights, and you may also have other rights which vary from state to state.

This warranty shall not be applicable to the extent that any provision of this warranty is prohibited by any federal, state or municipal law which cannot be pre-empted.

COMPLIANCE WITH FCC REGULATIONS

This equipment generates and uses radio frequency energy and if not installed and used properly, that is, in strict accordance with the manufacturer's instructions, may cause interference to radio and television reception. It has been type tested and found to comply with the limits for a Class B computing device in accordance with the specifications in Subpart J of Part 15 of FCC Rules, which are designed to provide reasonable protection against such interference in a residential installation. However, there is no guarantee that interference will not occur in a particular installation. If this equipment does cause interference to radio or television reception, which can be determined by turning the equipment off and on, the user is encouraged to try to correct the interference by one or more of the following measures:

- Reorient the receiving antenna
- Relocate the NES with respect to the receiver
- Move the NES away from the receiver
- Plug the NES into a different outlet so that the computer and receiver are on different circuits.

If necessary, the user should consult an experienced radio/television technician for additional suggestions. The user may find the following booklet prepared by the Federal Communications Commission helpful, How to Identify and Resolve Radio-TV Interference Problems. This booklet is available from the U.S. Government Printing Office, Washington, DC 20402 Stock No. 004-000-00345-4.

The NES Files

23
<http://www.nesfiles.com>



Distributed and marketed by Acclaim Entertainment, Inc.
189 South Street, Oyster Bay, N.Y. 11771

Kuros™ and Wizards & Warriors™ are trademarks
of Acclaim Entertainment, Inc. © 1987 Rare Ltd.
Nintendo® and Nintendo Entertainment
System® are trademarks of Nintendo of America Inc.
Game Pak "NES-GP"

Acclaim™ is a trademark of Acclaim Entertainment, Inc.
Package designed and produced by CMR.
© 1987 Acclaim Entertainment, Inc.

The NES Files

<http://www.nesfiles.com>

Printed in Japan